

IES Report

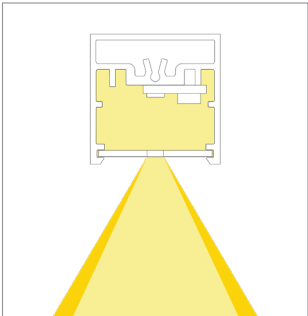
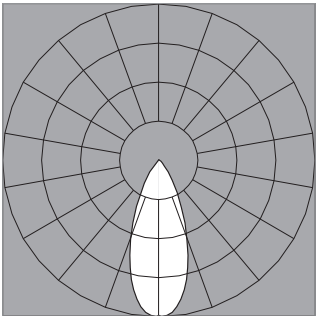
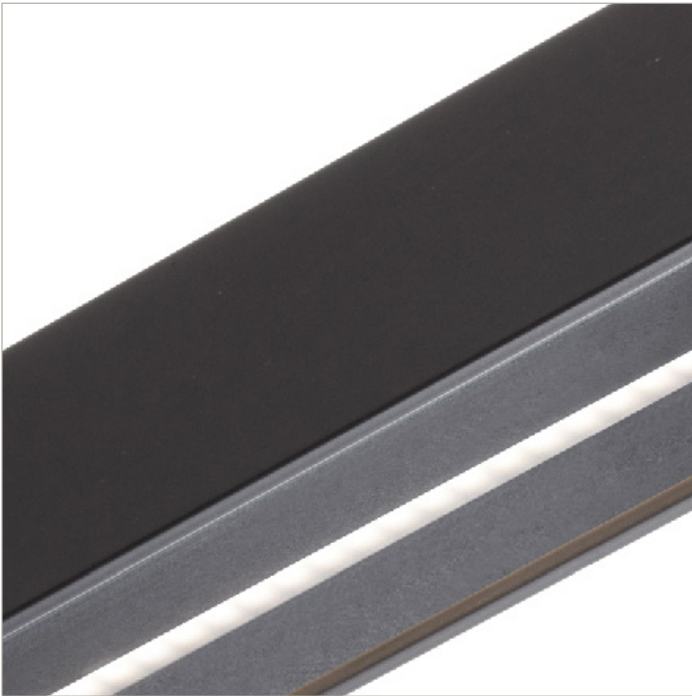
BoxRail<sup>®</sup> | 107 | 40° Symmetric | 80 CRI | LO

107-BX-XX-4-48-XX-XX-XX-XX-X-X-Z-LO-35-S1-X-BL-X

	2700K	3000K	3500K	4000K
Efficacy - Lumens per Watt	32	33	33	34
Total Lumens, 4' rail length (1219mm)	469	483	493	503
Lumens per foot (305mm)	117	121	123	126
Input Power (W), 4' rail length (1219mm)	15.0	15.0	15.0	15.0
Watts per foot (305mm)	3.8	3.8	3.8	3.8
CRI	85	85	85	85

Due to the large number of options in Vode’s product offering, most Vode IES reports are factored reports prepared from source reports. Source reports are the IES test reports prepared for Vode by an NVLAP accredited photometric test laboratory. Factored reports are based on data from the Vode source reports.

If the data above is in black, it is directly from a Vode source report. If it is in grey, it is factored from Vode source reports. Reference details on Vode source reports can be found on the [IES File Finder](#) page on [vode.com](#).



**IES Report**

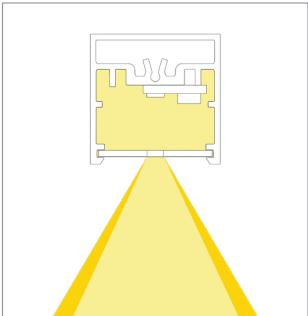
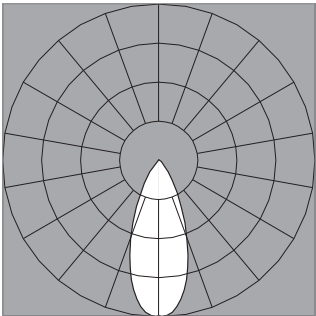
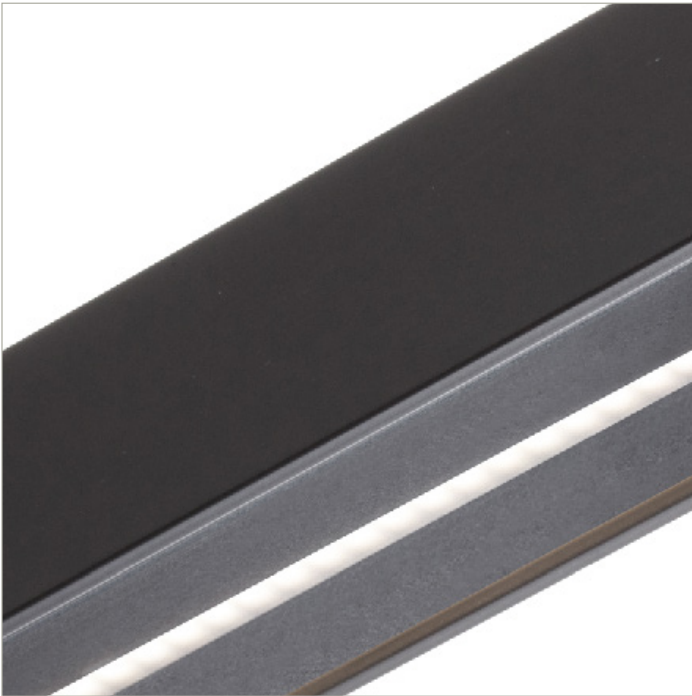
**BoxRail® | 107 | 40° Symmetric | 80 CRI | SO**

107-BX-XX-4-48-XX-XX-XX-XX-X-X-Z-SO-35-S1-X-BL-X

	2700K	3000K	3500K	4000K
Efficacy - Lumens per Watt	39	41	41	42
Total Lumens, 4' rail length (1219mm)	937	967	986	1006
Lumens per foot (305mm)	234	242	247	252
Input Power (W), 4' rail length (1219mm)	24.1	24.1	24.1	24.1
Watts per foot (305mm)	6.1	6.1	6.1	6.1
CRI	85	85	85	85

Due to the large number of options in Vode’s product offering, most Vode IES reports are factored reports prepared from source reports. Source reports are the IES test reports prepared for Vode by an NVLAP accredited photometric test laboratory. Factored reports are based on data from the Vode source reports.

If the data above is in black, it is directly from a Vode source report. If it is in grey, it is factored from Vode source reports. Reference details on Vode source reports can be found on the [IES File Finder](#) page on [vode.com](#).



IES Report

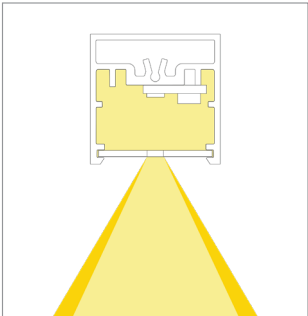
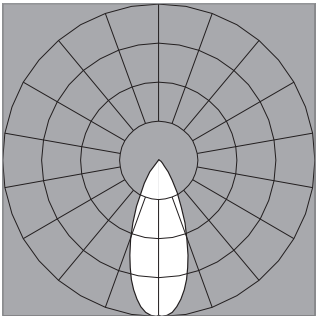
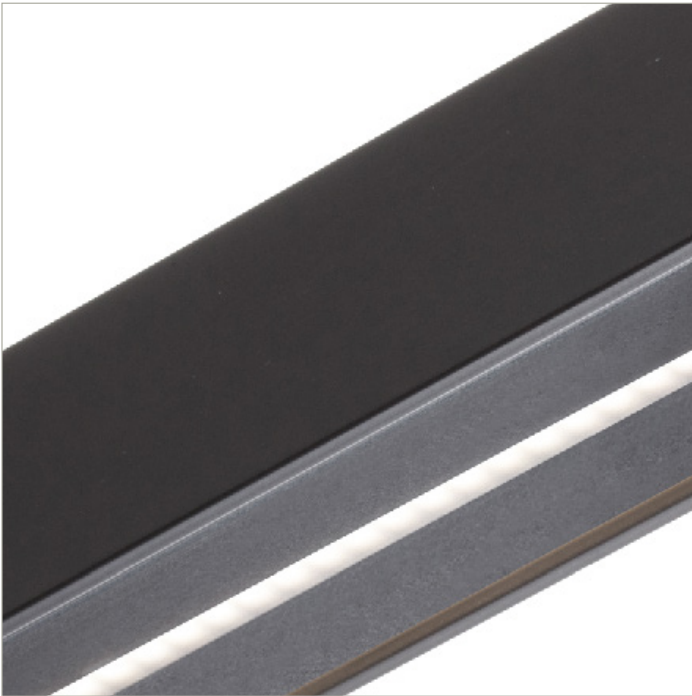
BoxRail® | 107 | 40° Symmetric | 80 CRI | HO

107-BX-XX-4-48-XX-XX-XX-XX-X-X-Z-HO-35-S1-X-BL-X

	2700K	3000K	3500K	4000K
Efficacy - Lumens per Watt	37	38	39	39
Total Lumens, 4' rail length (1219mm)	1781	1837	1874	1912
Lumens per foot (305mm)	445	459	469	478
Input Power (W), 4' rail length (1219mm)	49.2	49.2	49.2	49.2
Watts per foot (305mm)	12.4	12.4	12.4	12.4
CRI	85	85	85	85

Due to the large number of options in Vode’s product offering, most Vode IES reports are factored reports prepared from source reports. Source reports are the IES test reports prepared for Vode by an NVLAP accredited photometric test laboratory. Factored reports are based on data from the Vode source reports.

If the data above is in black, it is directly from a Vode source report. If it is in grey, it is factored from Vode source reports. Reference details on Vode source reports can be found on the [IES File Finder](#) page on [vode.com](#).



**IES Report**

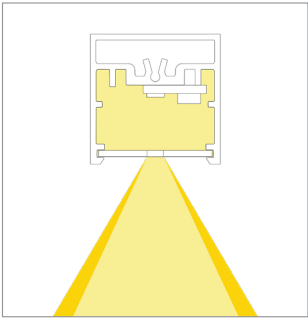
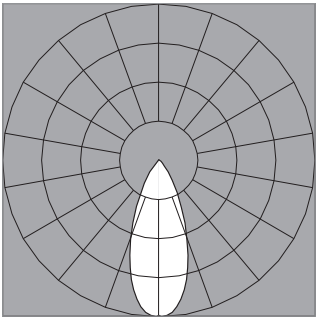
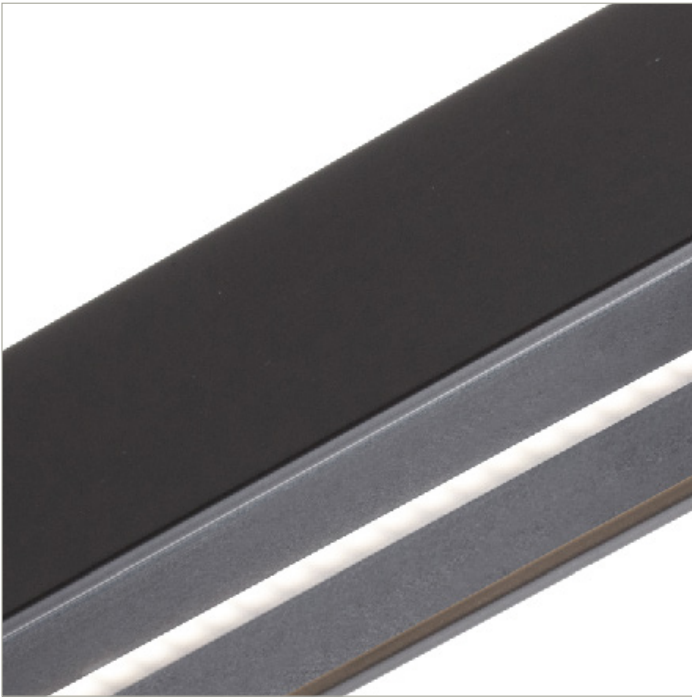
**BoxRail® | 107 | 40° Symmetric | 90 CRI | LO**

107-BX-XX-4-48-XX-XX-XX-XX-X-X-Z-LO-359-S1-X-BL-X

	2700K	3000K	3500K	4000K
Efficacy - Lumens per Watt	28	28	29	30
Total Lumens, 4' rail length (1219mm)	404	417	425	434
Lumens per foot (305mm)	101	104	106	108
Input Power (W), 4' rail length (1219mm)	15.0	15.0	15.0	15.0
Watts per foot (305mm)	3.8	3.8	3.8	3.8
CRI	96	96	96	96

Due to the large number of options in Vode’s product offering, most Vode IES reports are factored reports prepared from source reports. Source reports are the IES test reports prepared for Vode by an NVLAP accredited photometric test laboratory. Factored reports are based on data from the Vode source reports.

If the data above is in black, it is directly from a Vode source report. If it is in grey, it is factored from Vode source reports. Reference details on Vode source reports can be found on the [IES File Finder](#) page on [vode.com](#).



**IES Report**

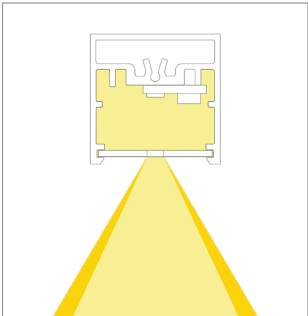
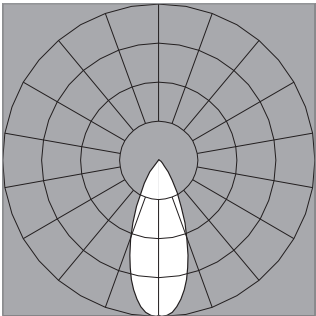
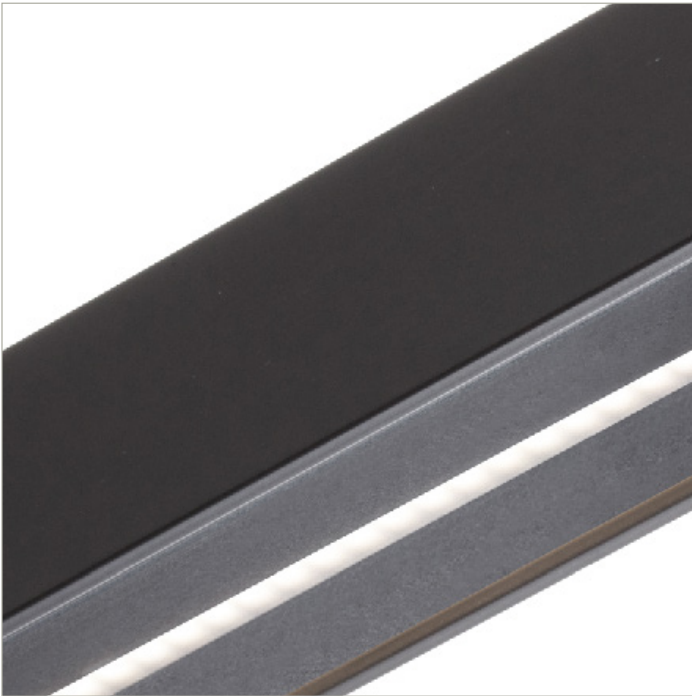
**BoxRail® | 107 | 40° Symmetric | 90 CRI | SO**

**107-BX-XX-4-48-XX-XX-XX-X-X-Z-SO-359-S1-X-BL-X**

	2700K	3000K	3500K	4000K
Efficacy - Lumens per Watt	34	35	36	37
Total Lumens, 4' rail length (1219mm)	808	833	850	867
Lumens per foot (305mm)	202	208	213	217
Input Power (W), 4' rail length (1219mm)	24.1	24.1	24.1	24.1
Watts per foot (305mm)	6.1	6.1	6.1	6.1
CRI	96	96	96	96

Due to the large number of options in Vode's product offering, most Vode IES reports are factored reports prepared from source reports. Source reports are the IES test reports prepared for Vode by an NVLAP accredited photometric test laboratory. Factored reports are based on data from the Vode source reports.

If the data above is in black, it is directly from a Vode source report. If it is in grey, it is factored from Vode source reports. Reference details on Vode source reports can be found on the [IES File Finder](#) page on [vode.com](#).



IES Report

BoxRail<sup>®</sup> | 107 | 40° Symmetric | 90 CRI | HO

107-BX-XX-4-48-XX-XX-XX-XX-X-X-Z-HO-359-S1-X-BL-X

	2700K	3000K	3500K	4000K
Efficacy - Lumens per Watt	32	33	33	34
Total Lumens, 4' rail length (1219mm)	1535	1583	1616	1648
Lumens per foot (305mm)	384	396	404	412
Input Power (W), 4' rail length (1219mm)	49.2	49.2	49.2	49.2
Watts per foot (305mm)	12.4	12.4	12.4	12.4
CRI	96	96	96	96

Due to the large number of options in Vode’s product offering, most Vode IES reports are factored reports prepared from source reports. Source reports are the IES test reports prepared for Vode by an NVLAP accredited photometric test laboratory. Factored reports are based on data from the Vode source reports.

If the data above is in black, it is directly from a Vode source report. If it is in grey, it is factored from Vode source reports. Reference details on Vode source reports can be found on the [IES File Finder](#) page on [vode.com](#).